

CLI GLOBAL SOCIETY

#CLIFighters

The Critical Limb Ischemia (CLI) Global Society is a nonprofit, multidisciplinary membership-based organization of healthcare providers committed to amputation prevention, thereby improving the lives of patients suffering from critical limb ischemia, the most severe form of peripheral arterial disease (PAD). CLI is a devastating manifestation of atherosclerosis that affects the lower extremities. The Society's mission is to "improve quality of life by preventing amputations and death due to critical limb ischemia" worldwide through patient advocacy, education, and awareness of the problem. The mission is reinforced on the Society website, in published annual reports, and in all associated scientific presentations.

CRITICAL LIMB ISCHEMIA GLOBAL SOCIETY

2023 EXECUTIVE SUMMARY

BOARD OF DIRECTORS



Barry T. Katzen, MD
President



Richard F. Neville, MD
Vice-President



Prof. Walter Dorigo, MD
Board Member



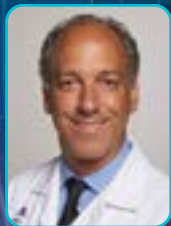
Caroline E. Fife, MD
Board Member



Daniella Kadian-Dodov, MD
Board Member



Andrew Holden, MBChB
Board Member



Robert Lookstein, MD
Board Member



John H. Rundback, MD
Board Member



Prof. Jos C. van den Berg, MD
Board Member



Prof. Thomas Zeller, MD
Board Member

1-888-254-2541 | info@cliglobalsociety.org
www.cliglobalsociety.org



EUROPE CHAPTER UPDATES

The Europe Chapter was founded in 2022 to address health policy and clinical challenges of CLI specific to European Countries. Its office seat is in Brussels, close to the European policy makers, and specifically focused on Europe to address the major differences that currently exists between the healthcare systems within its 27 member states. In 2023, the Board was expanded to include 3 new members – Prof. Marianne Brodmann, MD, an interventional angiologist from Graz, Austria, Dr. Daniel van den Heuvel, MD, an interventional radiologist from Nieuwegein, The Netherlands, and Dr. Mark Portou, a vascular surgeon from London, England. The EU Chapter is working to engage the EU Commission.

2023 also brought new collaborations with a co-developed session at the German CLI Kongress and AMP Europe as well as participation at a round-table session focusing on CLI at the annual meeting of the Italian Society for Angiology and Vascular Medicine. A study looking into the relationship of reimbursement of cost of CLI care and amputation rates in Europe has taken place and is under preparation for journal submission. A new study, in collaboration with the WifOR Institute is underway with the objective to develop a better understanding of potential impact from an overall economic point of view across Europe for CLTI.

Professor Zeller is leading two study projects with a large German health insurance company. One is exploring target limb revascularization and amputation rates after femoro-popliteal interventions that took place before and after the FDA paclitaxel warning. The second project will explore amputation and survival rates of CLTI patients in Germany stratified to disease level and type of care (conservative, endovascular, open surgical and primary amputation).

EU LEADERSHIP



Prof. Jos C. van den Berg, MD
Chariman



Prof. Thomas Zeller, MD
Vice-Chairman



Prof. Walter Dorigo, MD
Treasurer/Secretary



Prof. Marianne Brodmann, MD
Board Member



Mark Portou, PhD
Board Member



Daniel van den Heuvel, MD
Board Member



JOURNAL OF CRITICAL LIMB ISCHEMIA CELEBRATES TWO YEAR ANNIVERSARY

The Journal of Critical Limb Ischemia was launched in March 2021 and is a unique publication associated with the Society and the only scientific journal focused solely on CLI and amputation prevention. The Journal publishes peer-reviewed articles focused on critical limb ischemia, clinical care, research, and education. Each manuscript undergoes multiple independent peer reviews and is then vigorously reviewed by an editorial board and managing editor. A significant milestone was reached as the Journal was recently accepted by SCOPUS, the largest abstract and citation database of peer-reviewed literature, with submission to PubMed currently in process.

The journal is led by Editor-In-Chief, Jihad A. Mustapha, MD, JCLI. Professor Jos van den Berg was elected to the position of Associate Editor in 2023. Prof. van den Berg is an interventional radiologist, the Chairman of the CLI Global Society Europe office and affiliated with Clinica Luganese Moncucco in Lugano, Switzerland. The Journal received Scopus indexing in 2023. An application to PubMed for indexing is in process. Dr. Tatsuya Nakama, MD was recognized as the 2023 Journal of Critical Limb Ischemia Reviewer of the Year for his contribution, expertise, attention, and service to JCLI. Dr. Nakama is an interventional cardiologist affiliated with Tokyo Bay Medical Center in Tokyo, Japan.



Tatsuya Nakama, MD
2023 Reviewer of the Year



MCLIN MULTIDISCIPLINARY CLI NETWORK

The monthly Multidisciplinary CLI Network (MCLIN). MCLIN is an accredited, live, monthly discussion focused on complex case studies and complications dedicated to CLI. This is an exclusive member-only benefit for CLI Global Society members. In 2023, MCLIN hosted moderators, faculty and attendees from five continents



ICD-10 TASK FORCE RECONVENES

The ICD-10 Task Force has been reconvened. Participants include Dr. Robert Lookstein, MD, and Dr. Jeff Lehrman representing the CLI Global Society, Dr. Andrew Klein representing the Society for Cardiovascular Angiography & Interventions, Dr. Mitchell Weinberg representing the Society for Vascular Medicine, Dr. Sean Roddy representing the Society for Vascular Surgery and Dr. Kumar Madassery representing the Society of Interventional Radiology.



Robert Lookstein, MD
Jeffrey Lehrman, DPM



Mehdi Shishehbor, DO



Mitchell Weinberg, MD



Sean Roddy, MD



Kumar Madassery, MD

ADA INITIATIVES



**Amputation
Prevention
Alliance**

Proud Partner and Member of the American Diabetes Association's (ADA) Amputation Prevention Alliance (APA)

The CLI Global Society is a Proud Partner and Member of the American Diabetes Association's (ADA) Amputation Prevention Alliance (APA) with member representation on the Clinical Advisory Working Group. The mission of the APA is aligned with the CLI Global Society with its focus on saving limbs and lives, including among communities facing disproportionately high rates of amputations and amputated-related mortality. This work includes advancing needed policy changes, driving clinical awareness of opportunities to prevent amputations, and empowering patients to advocate for their best care. To address this crisis, the ADA has established the APA in partnership with innovators, clinical experts, leading health foundations, leaders in the diabetes community, policymakers, and provider groups. The mission is to disrupt the curve of amputations among low-income and minority individuals with diabetes.



The Leapfrog Group and the ADA partnered to launch an inpatient diabetes recognition program called Recognized Leader in Caring for People Living with Diabetes. Drs. Mustapha and Neville sat on planning group to develop this initiative. More info here: <https://www.leapfroggroup.org/recognized-leader-diabetes>.

For more information on the APA: <https://diabetes.org/advocacy/amputation-prevention-alliance>

CLI GLOBAL SOCIETY RESPONSE TO NEW YORK TIMES PUBLICATION

On July 15, 2023, the New York Times published an article regarding healthcare and limb loss. In response to this article, the CLI Global Society submitted a response to include the following:

CLI is a severely underdiagnosed and undertreated disease with a significant risk of amputation and mortality. It is estimated between 1 and 3 million Americans suffer from CLI(1). Left untreated, CLI can lead to non-healing wounds, gangrene, amputations, and eventually death. 60% of patients who undergo amputation due to PAD or CLI die within two years, surpassing the five-year mortality rate for patients with breast, colon, and prostate cancer (2).

The Society was formed in January 2016 to address the unmet clinical needs of patients with CLI and advocate for increased awareness and emphasis on this disease state. We are not focused on the entity of claudication, which is a manifestation of a less advanced form of PAD. The multidisciplinary leadership and membership include Vascular Surgeons, Interventional Cardiologists, Interventional Radiologists, Vascular Medicine Specialists, Podiatrists, Wound Care Specialists, Allied Health Professionals, and other healthcare providers committed to improving the outcomes of CLI, including disparities in care based on race, economics, and gender, to enhance limb preservation and reduce mortality in all patients with this disease.

The Society collaborates with like-minded organizations that share an interest in improving the lives of patients with CLI. We strongly desire to aggregate various backgrounds, perspectives, and experiences to address patient access to care, diagnosis, treatment, and outcomes to improve patient care and prevent amputations globally.

Important statistics about CLI:

- Patients from racial and ethnic minority groups experience higher incidence and worse outcomes of PAD, with 2 to 5 times higher amputation rates than white patients. (3)
- An estimated 300 non-traumatic amputations occur every day in the United States. (4)
- 85% of amputations due to CLI could be avoided. (5)
- 51% of patients undergoing primary major amputation for CLI receive no previous attempts at revascularization to preserve the limb. (2)
- Up to 61% of patients die within 2 years of undergoing an amputation for CLI. (2)
- Up to 78% of patients die within 4 years of undergoing an amputation CLI. (2)
- Only one-third of patients with CLI are prescribed optimal medical therapy. (6)
- Successful revascularization with bypass surgery or minimally invasive techniques doubles patient survival compared to amputation. (7)
- Major and minor amputation rates have increased by 50% from 2009 to 2015, with increasing rates more pronounced in younger adults with diabetes and PAD, who are at the highest risk for lower-extremity amputations.(8)
- The recent BASIL-2 and BEST-CLI trials have highlighted the significant cardiovascular mortality associated with this disease, regardless of the treatment strategy (endovascular vs surgery) (9-10).

It is the fervent hope of the CLI Global Society that the recently published article in the New York Times does not serve to inhibit or discourage patients from seeking appropriate care needed to prevent amputation and improve their morbidity, mortality, and quality of life.

REFERENCES:

1. Gerhard-Herman MD, Gornik HL, Barrett C, Barshes NR, Corriere MA, Drachman DE, Fleisher LA, Fowkes FG, Hamburg NM, Kinlay S, Lookstein R, Misra S, Mureebe L, Olin JW, Patel RA, Regensteiner JG, Schanzer A, Shishehbor MH, Stewart KJ, Treat-Jacobson D, Walsh ME. 2016 AHA/ACC Guideline on the management of patients with lower extremity peripheral artery disease: a report of the American College of Cardiology/American Heart Association Task Force on Clinical Practice Guidelines. *J Am Coll Cardiol*. 2017;69:e71–e126.
2. Jihad A, Mustapha MD, Barry T, Katzen MD, Richard F, Neville MD, Robert A, Lookstein MD, Thomas Zeller MD, Larry E, Miller PhD, Michael R, Jaff DO. Determinants of Long-Term Outcomes and Costs in the Management of Critical Limb Ischemia: A Population-Based Cohort Study. *J Am Heart Assoc*. 2018;7:e009724. DOI: 10.1161/JAHA.118.009724.
3. Newhall K, Spangler E, Dzebisashvili N, Goodman DC, Goodney P. Amputation rates for patients with diabetes and peripheral arterial disease: the effects of race and region. *Ann Vasc Surg*. 2016; 30:292-298. e1. doi: 10.1016/j.avsg.2015.07.040
4. Creager MA, Matsushita K, Arya S, Beckman JA, Duval S, Goodney PP, Gutierrez JAT, Kaufman JA, Joynt Maddox KE, Pollak AW, Pradhan AD, Whitsel LP Reducing Nontraumatic Lower-Extremity Amputations by 20% by 2030: Time to Get to Our Feet: A Policy Statement From the American Heart Association Circulation. 2021;143:e875–e891.
5. Singh G, Chawla S. Amputation in Diabetic Patients. *Med J Armed Forces India*. 2006 Jan;62(1):36-9. doi: 10.1016/S0377-1237(06)80151-6. Epub 2011 Jul 21. PMID: 27407841; PMCID: PMC4923303.
6. Chung J, Timaran DA, Modrall JG, et al. Optimal medical therapy predicts amputation-free survival in chronic critical limb ischemia. *J Vasc Surg*. 2013;58:972-980.
7. Mustapha JA, Katzen BT, Neville RF, et al. Disease burden and clinical outcomes following initial diagnosis of critical limb ischemia in the Medicare population. *JACC Cardiovasc Interv*. 2018;11:1011-1012.
8. Criqui MH, Aboyans V. Epidemiology of peripheral artery disease. *Circ Res* 2015;116:1509-1526. doi: 10.1161/CIRCRESAHA.116.303849.
9. Bradbury AW, Moakes CA, Popplewell M, Meecham L, Bate GR, Kelly L, Chetter I, Diamantopoulos A, Ganeshan A, Hall J, Hobbs S, Houlind K, Jarrett H, Lockyer S, Malmstedt J, Patel JV, Patel S, Rashid ST, Saratzis A, Slinn G, Scott JA, Zayed H, Deeks JJ. A vein bypass first versus a best endovascular treatment first revascularisation strategy for patients with chronic limb threatening ischaemia who required an infra-popliteal, with or without an additional more proximal infra-inguinal revascularisation procedure to restore limb perfusion (BASIL-2): an open-label, randomised, multicentre, phase 3 trial. *Lancet* 2023;401:1798-1809.
10. Faber A, Menard MT, Conte MS, Kaufman JA, Powell RJ, Choudry NK, Hamza TH, Assmann SF, Creager MA, Cziraky MJ, Dake MD, Jaff MR, Reid D, Siami FS, Sopko G, White CJ, van Over M, Strong MB, Villarreal MF, McKean M, Azene E, Azarbal A, Barleben A, Chew DK, Calviño LC, Douville Y, Findeliss Y, Garg N, Gasper W, Giles KA, Goodney PA, Hawkins BM, Herman CR, Kalish JA, Koopmann MC, Laskowski IA, Hertado-Mena C, Montaganahalli R, Rowe VL, Schanzer A, Schneider PA, Siracuse JJ, Venermo M, Rosenfeld K. Surgery or Endovascular Therapy for Chronic Limb-Threatening Ischemia. *N Engl J Med*. 2022; 387(25):2305-2316.

BEST CLI AND BASIL 2 RESULTS IN 2023

In 2023 two editorials submitted on behalf of the CLI Global Society Board of Directors were published in JCLI: The BEST-CLI Trial: Time for Pause or Action? And Following BEST-CLI and BASIL-2, Do We Better Understand How to “Best” Serve Critical Limb Threatening Ischemia Patients?

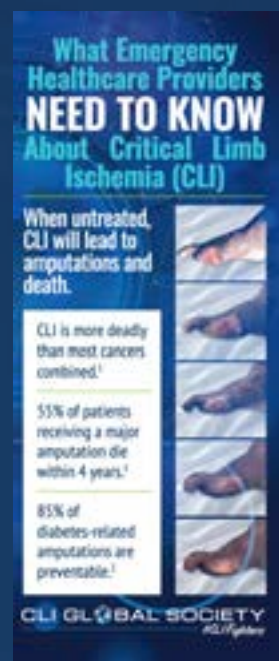
An additional publication on behalf of the Society was a Round Table Discussion on BEST-CLI Implications of the Available Data with interviewer Dr. Barry Katzen, President of the CLI Global Society included the following participants: Walter Dorigo, MD; Anahita Dua, MBChB, BMA, MSc; Andrew Holden, MBChB, FRANZCR, EBIR, ONZM; Robert Lookstein, MD, MHCDL, FSIR, FAHA, FSVM; Jihad A. Mustapha, MD, FACC, FSCAI; Richard F. Neville, MD, FACS; John H. Rundback, MD, FAHA, FSVM, FSIR; Eric Secemsky, MD, MSc, RPVI, FACC, FAHA, FSCAI, FSVM; Jos C. van den Berg, MD, PhD; and Thomas Zeller, MD

MEMBER BENEFITS



The Society launched a toolkit for members to raise awareness during September 2023 PAD Awareness Month.

The CLI Global Society Communications Committee developed Referring Physician/Health Care Provider Brochures to provide front-line emergency and healthcare provider education on the importance of recognizing CLI and finding qualified CLI Specialists. These brochures are downloadable and customizable to include Member's logo. Members also may order 50 complimentary hard copies per year.



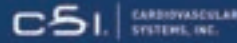
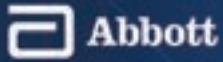
LIVE WEBINARS

A live webinar was held in the fall of 2023 titled “Uniting Forces: The Power of a CLI Team.” This complimentary webinar was available for members and non-members.

Dr. Barry Katzen, Dr. Daniel Clair, Dr. Daniella Kadian-Dodov, Dr. Richard F. Neville, Prof. Jos C. van den Berg and Prof. Thomas Zeller led a webinar on BEST-CLI and BASIL-2 Results: Understanding the Takeaways and How the Results Should Affect Your Clinical Practice. This webinar is available for On-Demand CME credit.



THANK YOU TO OUR CLI GLOBAL SOCIETY SUPPORTERS



THANK YOU TO OUR EUROPE CHAPTER SUPPORTERS



THANK YOU COMMITTEE MEMBERS

Communication Committee Members:

Lorie Henderson, NP, Chair, David Alper, DPM, John Fry, MD, Kevin Herman, MD, Kymberlie McNicholas

Revascularization & Publications Committee Members:

Fadi A. Saab, MD, Chair, Mahmoud Abdelghany, MD, Imraan Ansaarie, MD, Mac Ansari, MD, Erwin Blessing, MD, Larry Diaz-Sandoval, MD, Mario D'Oria, MD, Anahita Dua, MD, Mazin Foteh, MD, Grigorious Korosoglou, MD, Kumar Madassery, MD, Zola N'Dandu, MD, Pradeep Nair, MD, Tatsuya Nakama, MD, Bob Tahara, MD, Bret Wiechmann, MD, David Yeager, DPM

CLI GLOBAL SOCIETY
#CLIFighters

1-888-254-2541 | info@cliglobalsociety.org
www.cliglobalsociety.org

